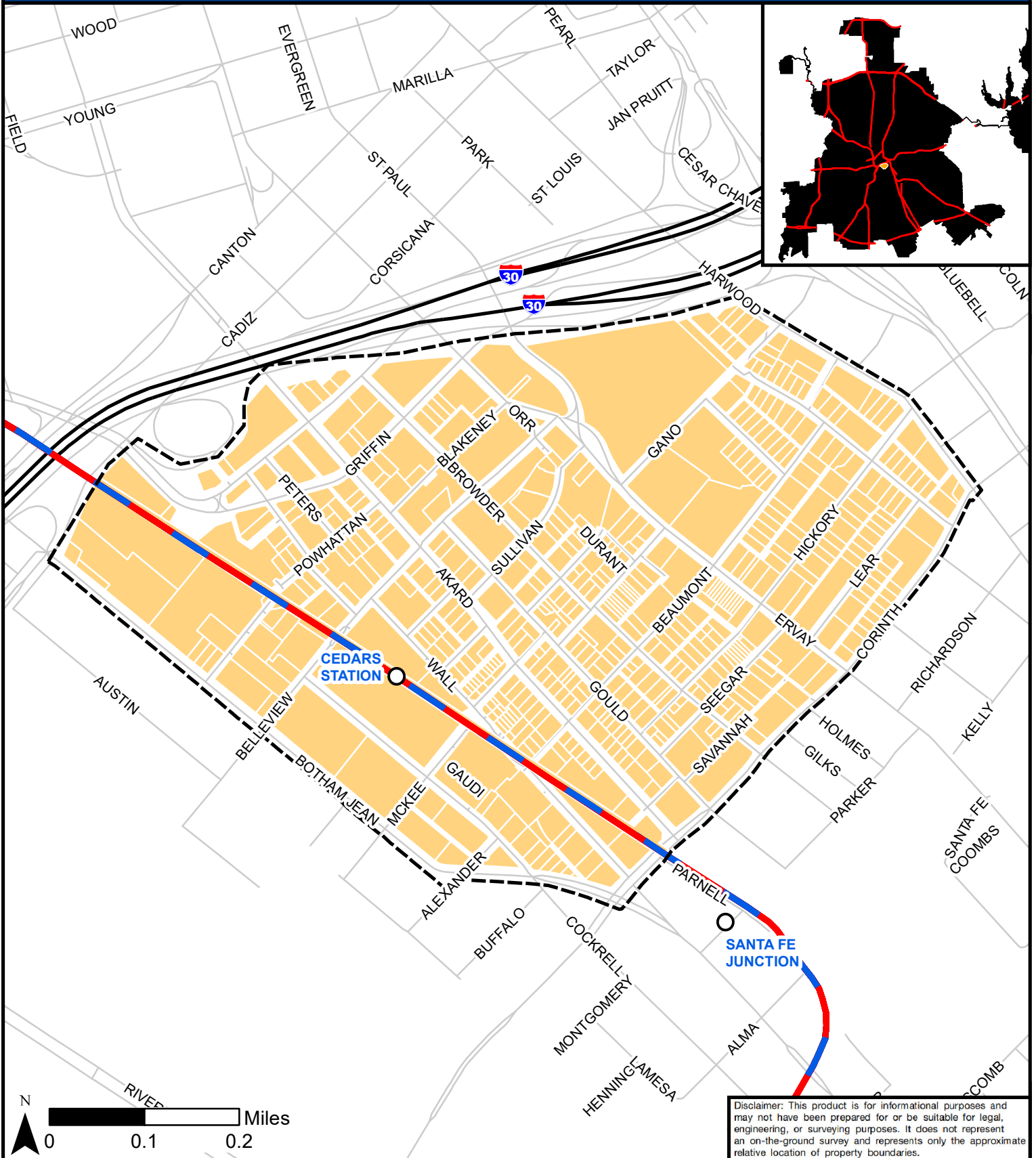



Cedars TIF District



Disclaimer: This product is for informational purposes and may not have been prepared for or be suitable for legal, engineering, or surveying purposes. It does not represent an on-the-ground survey and represents only the approximate relative location of property boundaries.

 **City of Dallas**
 Office of Economic Development
 (214) 670-1685
www.dallasecodev.org
Created 7.2.21, Cedars_2021_PDFUpdate.MB.

Legend

- Cedars TIF Parcels
- Rail Station
- Highways
- Cedars TIF Boundary
- DART Blue and Red Lines
- Arterial Roads

Source: Dallas Area Rapid Transit, Dallas Central Appraisal District, and City of Dallas.